

Scandinavian Shuffle

Svend Asmussen
feld: Jens Johansen

1old/1sor

G 2 3

Sopraan
Lam da ba du ba dam bam bah. Lam da ba du ba dam

Alto
Lam da ba du ba dam bam bah. Lam da ba du ba dam

Tenor
Lam da ba du ba dam bam bah. Lam da ba du ba dam

Bas
Dum dum dum ba du ba du ba dum dum ba

1/2

4 C 5 6

S.
bah. Lam da ba du ba dam bam bah.

A.
bah. Lam da ba du ba dam bam bah.

T.
bah. Lam da ba du ba dam bam bah.

B.
du ba dum dum dum dum dum dum ba du ba du ba

1/3

7 8 9^{1.} G H7 10 Em

S.
Lam da ba du ba dam bah. Ba dadl ladn dadl ladn dadl la dah. Ba

A.
Lam da ba du ba dam bah. Ba dadl ladn dadl ladn dadl la dah. Ba

T.
Lam da ba du ba dam bah. Wha wha wha wha

B.
dum dum dum dum ba dum Wha wha wha

11 Hm Fis7 12 Hm H° 13 D Hm 14 E7 A7

S. dadl ladn dadl ladn dadl la dah Ba dam ba dam, ba dam ba dam

A. dadl ladn dadl ladn dadl la dah Ba dam ba dam, ba dam ba dam

T. wha wha wha wha wha wha wha

B. wha wha wha wha wha wha wha wha

15 D 16 D7 G 2

S. bah. Lam da ba du ba dam bam bah.

A. bah. Lam da ba du ba dam bam bah.

T. wha Lam da ba du ba dam bam bah.

B. wha ba du ba dum dum dum Dum dum dum ba du ba du ba

3 4 C 5 6

S. Lam da ba du ba dam bah. Lam da ba du ba dam bam bah.

A. Lam da ba du ba dam bah. Lam da ba du ba dam bam bah.

T. Lam da ba du ba dam bah. Lam da ba du ba dam bam bah.

B. dum dum ba du ba dum dum dum dum dum dum ba du ba du ba

2/1

7 8 17 18

G H7 Em G7

S. Lam da ba du ba dam bah. Ba dadl ladn dadl ladn dadl ladn dadl ladn

A. Lam da ba du ba dam bah. Ba dadl ladn dadl ladn dadl ladn dadl ladn

T. Lam da ba du ba dam bah. Wha wha wha wha

B. dum dum dum dum ba dum Wha wha Wha wha

2/2

19 20 21 22

C E7 Am As° G Em A7 D7

S. dadl ladn dadl ladn dadl la dah Ba dam ba dam, ba dam ba dam

A. dadl ladn dadl ladn dadl la dah Ba dam ba dam, ba dam ba dam

T. wha wha wha wha wha wha wha

B. wha wha wha wha wha wha wha wha

2/3

23 24 25 26 27

2.gang til Coda G G7 C F7

S. bah. Dui - ja dam ba dam ba dam bam bam. Dui - ja dam ba dam

A. bah. Dui - ja dam ba dam ba dam bam bam. Dui - ja dam ba dam

T. wha Dui - ja dam ba dam ba dam bam bam. Dui - ja dam ba dam

B. wha ba du ba dum dum dum Ah ah

2/4

28

29 C

30 G7

31 C

S. ba dam bam bam Dui - ja dam ba dam da dam bam bam bah.

A. ba dam bam bam Dui - ja dam ba dam da dam bam bam bah.

T. ba dam bam bam Dui - ja dam ba dam da dam bam bam bah.

B. ah ah ah. Ba

3/1

32

C7

33 F

34

35 Bb7

S. Dui - ja dam ba dam ba dam bam bam Dui - ja dam ba dam

A. Dui - ja dam ba dam ba dam bam bam Dui - ja dam ba dam

T. Dui - ja dam ba dam ba dam bam bam Dui - ja dam ba dam

B. du ba dum dum dum ah ah

3/2

36

37 F

38 C7

39 F

G7

S. da dam bam bam Dui - ja dam ba dam da dam bam bam bah. Dap du-ah

A. da dam bam bam Dui - ja dam ba dam da dam bam bam bah. Dap du-ah

T. da dam bam bam Dui - ja dam ba dam da dam bam bam bah. Dap du-ah

B. ah ah ah. Dap du-ah

40 3/3 41 C 42 C7 43 A7 Break

S. Dui - ja dam ba dam da dam bam bam bam. La ba da ba da ba

A. Dui - ja dam ba dam da dam bam bam bam. La ba da ba da ba

T. Wha wha whap

B. Wha wha whap

44 3/4 45 Dm 46

S. da ba da ba da ba da ba Dui - ja dam ba dam ba dam bam bam

A. da ba da ba da ba da ba Dui - ja dam ba dam ba dam bam bam

T. Wha wha

B. Wha wha

47 4/1 Bb Break 48 49 C 50

S. bam. La ba da ba da ba bah bah. Dui - ja dam ba dam ba dam bam bam

A. bam. La ba da ba da ba bah bah. Dui - ja dam ba dam ba dam bam bam

T. whap Dui - ja dam ba dam ba dam bam bam

B. whap ah

51 F 52 53 C 54 G7

S. Dui - ja dam ba dam da dam bam bam Dui - ja dam ba dam da dam bam bam

A. Dui - ja dam ba dam da dam bam bam Dui - ja dam ba dam da dam bam bam

T. Dui - ja dam ba dam da dam bam bam Dui - ja dam ba dam da dam bam bam

B. ah ah ah

55 C D7 56 G 2 3

S. bah. Dap du-ah Lam da ba du ba dam bam bah. Lam da ba du ba dam

A. bah. Dap du-ah Lam da ba du ba dam bam bah. Lam da ba du ba dam

T. bah. Dap du-ah Lam da ba du ba dam bam bah. Lam da ba du ba dam

B. ah. Dap du-ah Dum dum dum ba du ba du ba dum dum ba

4 C 5 6 7

S. bah. Lam da ba du ba dam bam bah. Lam da ba du ba dam

A. bah. Lam da ba du ba dam bam bah. Lam da ba du ba dam

T. bah. Lam da ba du ba dam bam bah. Lam da ba du ba dam

B. du ba dum dum dum dum dum ba du ba du ba dum dum

8 9 G H7 10 Em 11 Hm Fis7

S.
 bah. Ba dadl ladn dadl ladn dadl la dah. Ba dadl ladn dadl ladn

A.
 bah. Ba dadl ladn dadl ladn dadl la dah. Ba dadl ladn dadl ladn

T.
 bah. Wha wha wha wha wha wha

B.
 dum dum ba dum Wha wha wha wha wha

12 Hm H° 13 D Hm 14 E7 A7 15 D 16 D7

S.
 dadl la dah Ba dam ba dam, ba dam ba dam bah.

A.
 dadl la dah Ba dam ba dam, ba dam ba dam bah.

T.
 wha wha wha wha wha wha

B.
 wha wha wha wha wha wha wha ba du ba dum dum dum

G 2 3 4 C

S.
 Lam da ba du ba dam bam bah. Lam da ba du ba dam bah.

A.
 Lam da ba du ba dam bam bah. Lam da ba du ba dam bah.

T.
 Lam da ba du ba dam bam bah. Lam da ba du ba dam bah.

B.
 Dum dum dum ba du ba du ba dum dum ba du ba dum dum dum

5 6 7 8

S. Lam da ba du ba dam bam bah. Lam da ba du ba dam bah. Ba

A. Lam da ba du ba dam bam bah. Lam da ba du ba dam bah. Ba

T. Lam da ba du ba dam bam bah. Lam da ba du ba dam bah.

B. dum dum dum ba du ba du ba dum dum dum dum ba dum

17 18 19 20

G H7 Em G7 C E7 Am As°

S. dadl ladn dadl ladn dadl ladn dadl ladn dadl ladn dadl la dah

A. dadl ladn dadl ladn dadl ladn dadl ladn dadl ladn dadl la dah

T. Wha wha wha wha wha wha wha wha

B. Wha wha Wha wha wha wha wha wha

21 22 57 Coda 58

G Em A7 D7 G Em A7 D7

4/3

S. Ba dam ba dam, ba dam ba dam Ba dam ba dam, ba dam ba dam

A. Ba dam ba dam, ba dam ba dam Ba dam ba dam, ba dam ba dam

T. wha wha wha wha wha wha wha

B. wha wha wha wha wha wha wha

59 4/4 60 61 62 63

S. *G* *Em* *A7* *D7* *G*
 Ba dam ba dam, ba dam ba dam bah. Du - ah

A. Ba dam ba dam, ba dam ba dam bah. Ba dam ba dam bam.

T. *gliss.*
 wha wha wha wham. Ba dam ba dam bam.

B. wha wha wha wha wham. Ba dam ba dam bam.

Sopraan

Scandinavian Shuffle

Svend Asmussen
feld: Jens Johansen

1old/1sor

G 2 3 4 C

Lam da ba du ba dam bam bah. Lam da ba du ba dam bah.

1/2

5 6 7 8

Lam da ba du ba dam bam bah. Lam da ba du ba dam bah. Ba

1/3

1/4

9 10 11 12

1. G H7 Em Hm Fis7 Hm H°

dadl ladndadl ladn dadl la dah. Ba dadl ladn dadl ladn dadl la dah

13 14 15 16

D Hm E7 A7 D D7 G

Ba dam ba dam, badam badam bah. Lam da ba du ba dam

2 3 4 5 6

C

bam bah. Lam da ba du ba dam bah. Lam da ba du ba dam bam bah.

2/1

7 8 17 18

G H7 Em G7

Lam da ba du ba dam bah. Ba dadl ladndadl ladn dadl ladndadl ladn

19 20 21 22 23

C E7 Am As° G Em A7 D7

2.gang til Co

dadl ladn dadl ladn dadl la dah Ba dam ba dam, badam badam bah.

24 $\frac{2}{3}$ G7 25 C 26 27 F7

Dui - ja dam ba dam ba dam bam bam. Dui - ja dam ba dam

28 $\frac{2}{4}$ 29 C 30 G7 31 C 32 C7

ba dam bam bam Dui - ja dam ba dam da dam bam bam bah.

33 $\frac{3}{1}$ F 34 35 Bb7

Dui - ja dam ba dam ba dam bam bam Dui - ja dam ba dam

36 $\frac{3}{2}$ 37 F 38 C7 39 F G7

da dam bam bam Dui - ja dam ba dam da dam bam bam bah. Dap du-ah

40 $\frac{3}{3}$ 41 C 42 C7 43 A7 Break

Dui - ja dam ba dam da dam bam bam bam. La ba da ba da ba

44 $\frac{3}{4}$ 45 Dm 46

da ba da ba da ba da ba Dui - ja dam ba dam ba dam bam bam

47 Bb Break 48 49 C 50

bam. La ba da ba da ba bah bah. Dui - ja dam ba dam ba dam bam bam

51 F 52 53 C $\frac{4}{2}$

Dui - ja dam ba dam da dam bam bam Dui - ja dam ba dam

54 G7 55 C D7 56 G 2

da dam bam bam bah. Dap du-ah Lam da ba du ba dam bam bah.

3 4 C 5 6

Lam da ba du ba dam bah. Lam da ba du ba dam bam bah.

7 8 9 G H7 10 Em

Lam da ba du ba dam bah. Ba dadl ladn dadl ladn dadl la dah. Ba

11 Hm Fis7 12 Hm H° 13 D Hm 14 E7 A7 15 D

dadl ladn dadl ladn dadl la dah Ba dam ba dam, badam badam bah.

16 D7 G 2 3 4 C

Lam da ba du ba dam bam bah. Lam da ba du ba dam bah.

5 6 7 8

Lam da ba du ba dam bam bah. Lam da ba du ba dam bah. Ba

17 G H7 18 Em G7 19 C E7 20 Am As°

dadl ladn dadl ladn dadl ladn dadl ladn dadl la dah

21 G Em 22 A7 D7 57 G Coda Em 58 A7 D7

Ba dam ba dam, badam badam Ba dam ba dam, badam badam

59 **G** **Em** **A7** **D7** **G** **4/4**
Ba dam ba dam, ba dam ba dam bah. Du - ah
60 61 62 63

Alto

Scandinavian Shuffle

Svend Asmussen
feld: Jens Johansen

1old/1sor

2 3 4

Lam da ba du ba dam bam bah. Lam da ba du ba dam bah.

Detailed description: This block contains the first four measures of the piece. The music is in G major and 4/4 time. The melody consists of quarter notes and eighth notes. The lyrics are 'Lam da ba du ba dam bam bah. Lam da ba du ba dam bah.' Measure numbers 2, 3, and 4 are indicated above the staff.

1/2

5 6 7 8

Lam da ba du ba dam bam bah. Lam da ba du ba dam bah. Ba

Detailed description: This block contains measures 5 through 8. The melody continues with quarter and eighth notes. The lyrics are 'Lam da ba du ba dam bam bah. Lam da ba du ba dam bah. Ba'. Measure numbers 5, 6, 7, and 8 are indicated above the staff.

1/3

9 10 11 12

dadl ladn dadl ladn dadl la dah. Ba dadl ladn dadl ladn dadl la dah

Detailed description: This block contains measures 9 through 12. The melody features a triplet of eighth notes in measure 9, followed by eighth and quarter notes. The lyrics are 'dadl ladn dadl ladn dadl la dah. Ba dadl ladn dadl ladn dadl la dah'. Measure numbers 9, 10, 11, and 12 are indicated above the staff.

1/4

13 14 15 16

Ba dam ba dam, badam badam bah. Lam da ba du ba dam

Detailed description: This block contains measures 13 through 16. The melody includes a half note in measure 13, followed by quarter notes and eighth notes. The lyrics are 'Ba dam ba dam, badam badam bah. Lam da ba du ba dam'. Measure numbers 13, 14, 15, and 16 are indicated above the staff.

2 3 4 5 6

bam bah. Lam da ba du ba dam bah. Lam da ba du ba dam bam bah.

Detailed description: This block contains measures 17 through 20. The melody continues with quarter and eighth notes. The lyrics are 'bam bah. Lam da ba du ba dam bah. Lam da ba du ba dam bam bah.' Measure numbers 2, 3, 4, 5, and 6 are indicated above the staff.

2/1

7 8 17 18

Lam da ba du ba dam bah. Ba dadl ladndadl ladn dadl ladndadl ladn

Detailed description: This block contains measures 21 through 24. The melody features a triplet of eighth notes in measure 21, followed by eighth and quarter notes. The lyrics are 'Lam da ba du ba dam bah. Ba dadl ladndadl ladn dadl ladndadl ladn'. Measure numbers 7, 8, 17, and 18 are indicated above the staff.

2/2

19 20 21 22

dadl ladn dadl ladn dadl la dah Ba dam ba dam, badam badam

Detailed description: This block contains measures 25 through 28. The melody includes a half note in measure 25, followed by quarter notes and eighth notes. The lyrics are 'dadl ladn dadl ladn dadl la dah Ba dam ba dam, badam badam'. Measure numbers 19, 20, 21, and 22 are indicated above the staff.

2/3
 2.gang til Coda
 23 24 25 26 27
 bah. Dui - ja dam ba dam ba dam bam bam. Dui - ja dam ba dam

2/4
 28 29 30 31 32
 ba dam bam bam Dui - ja dam ba dam da dam bam bam bah.

3/1
 33 34 35
 Dui - ja dam ba dam ba dam bam bam Dui - ja dam ba dam

3/2
 36 37 38 39
 da dam bam bam Dui - ja dam ba dam da dam bam bam bah. Dap du-ah

3/3
 40 41 42 43
 Dui - ja dam ba dam da dam bam bam bam. La ba da ba da ba

3/4
 44 45 46
 da ba da ba da ba da ba Dui - ja dam ba dam ba dam bam bam

4/1
 47 48 49 50
 bam. La ba da ba da ba bah bah. Dui - ja dam ba dam ba dam bam bam

4/2
 51 52 53
 Dui - ja dam ba dam da dam bam bam Dui - ja dam ba dam

54 55 56 2

da dam bam bam bah. Dap du-ah Lam da ba du ba dam bam bah.

3 4 5 6

Lam da ba du ba dam bah. Lam da ba du ba dam bam bah.

7 8 9 10

Lam da ba du ba dam bah. Ba dadl ladn dadl ladn dadl la dah. Ba

11 12 13 14

dadl ladn dadl ladn dadl la dah Ba dam ba dam, ba dam ba dam

15 16 2 3 4

bah. Lam da ba du ba dam bam bah. Lam da ba du ba dam bah.


5 6 7 8

Lam da ba du ba dam bam bah. Lam da ba du ba dam bah. Ba

17 18 19 20

dadl ladn dadl ladn dadl ladn dadl ladn dadl la dah

4/3

 Coda

21 22 57 58

Ba dam ba dam, ba dam ba dam Ba dam ba dam, ba dam ba dam

4/4

59 60 61 62 63

Ba dam ba dam, ba dam ba dam bah. Ba dam ba dam bam.

Tenor

Scandinavian Shuffle

Svend Asmussen
feld: Jens Johansen

1old/1sor

8 2 3 4

Lam da ba du ba dam bam bah. Lam da ba du ba dam bah.

1/2

5 6 7 8 91.

Lam da ba du ba dam bam bah. Lam da ba du ba dam bah. Wha wha

1/3

1/4

10 11 12 13 14 15 16

wha wha wha wha wha wha wha wha

2

8 2 3 4

Lam da ba du ba dam bam bah. Lam da ba du ba dam bah.

2/1

5 6 7 8 17

Lam da ba du ba dam bam bah. Lam da ba du ba dam bah. Wha wha

2/2

18 19 20 21 22 23 24

wha wha wha wha wha wha wha wha

\oplus 2.gang til Coda

2/3

25 26 27

Dui - ja dam ba dam ba dam bam bam. Dui - ja dam ba dam

2/4

28 29 30 31 32

ba dam bam bam Dui - ja dam ba dam da dam bam bam bah.

18 19 20 21 22 57 58 59

Coda $\frac{4}{3}$

wha wha wha wha wha wha wha wha wha wha wha wha

60 61 62 63

$\frac{4}{4}$

wha wha wham. Ba dam ba dam bam.

Scandinavian Shuffle

Svend Asmussen
feld: Jens Johansen

1old/1sor

2 3 4

Dum dum dum ba du ba du ba dum dum ba du ba dum dum dum

1/2

1/3

5 6 7 8 9.1.

dum dum dum ba du ba du ba dum dum dum dum ba dum Wha wha

1/4

10 11 12 13 14 15

wha wha wha wha wha wha wha wha wha wha ba

16 2 3

du ba dum dum dum Dum dum dum ba du ba du ba dum dum ba

4 5 6 7

du ba dum dum dum dum dum dum ba du ba du ba dum dum

2/1

2/2

8 17 18 19 20 21

dum dum badum Wha wha Wha wha wha wha wha wha wha wha

⊕ 2.gang til Coda

2/3

2/4

22 23 24 25 26 27 28 29 30 31

wha wha wha ba du badum dum dum Ah ah ah ah ah. Ba

3/1

3/2

3/3

32 33 34 35 36 37 38 39 40 41

du badum dum dum ah ah ah ah ah. Dap du-ah Wha

3/4

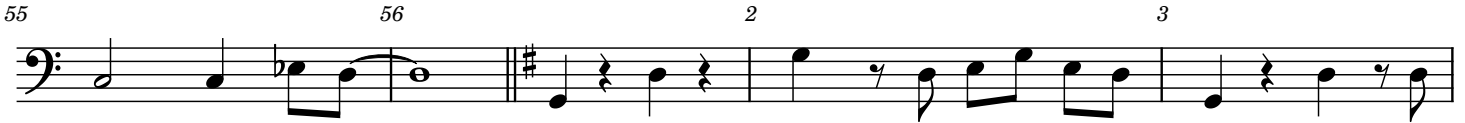
4/1

4/2

42 43 44 45 46 47 48 49 50 51 52 53 54



wha whap Wha wha whap ah ah ah ah



ah. Dap du-ah Dum dum dum ba du ba du ba dum dum ba



du ba dum dum dum dum dum dum ba du ba du ba dum dum



dum dum badum Wha wha wha wha wha wha wha wha



wha wha wha ba du badum dum dum Dum dum dum ba du ba du ba



dum dum ba du badum dum dum dum dum dum ba du ba du ba dum dum



dum dum badum Wha wha Wha wha wha wha wha wha wha wha

4/3



Coda



wha wha wha wha wha wha wha wha wha wha wham.

4/4



Ba dam ba dam bam.