

Nunc Dimittis

H. Purcell

1old/1sor **1/2**

Soprano
Lord, Now let - test Thou Thy ser - vant de - part in peace, ac -

Alto
Lord, Now let - test Thou Thy ser - vant de - part in peace, ac -

Tenor
Lord, Now let - test Thou Thy ser - vant de - part in peace, ac -

Bass
Lord, Now let - test Thou Thy ser - vant de - part in peace, ac -

6 **1/3**

S.
cord - ing to Thy word. For mine eyes have seen, have

A.
cord - ing to Thy word. For mine eyes have seen, have

T.
cord - ing to Thy word. *(alt szólam)*

B.
cord - ing to Thy word. *For mine eyes have seen, have*

12 **2/1**

S.
seen Thy sal - va - tion, Which Thou hast pre - par - ed: be - fore the

A.
seen Thy sal - va - tion, Which Thou hast pre - par - ed: be - fore the

T.
seen Thy sal - va - tion, Which Thou hast pre - par - ed: be - fore the

B.
seen Thy sal - va - tion, Which Thou hast pre - par - ed: be - fore the

2/2

17

S. face, the face of all peo - ple;

A. face, the face of all peo - ple; To be a light to light - en the gen - tiles

T. To be a light to light - en the gen - tiles

B. **Bass!!**
face, the face of all peo - ple; To be a light to light - en the gen - tiles

2/3

24

S.

A. and to be the glo ry, the glo

T. and to be the glo ry, the glo

B. and to be the glo ry, the glo

3/1

29

S. Glo - ry be to the Fa - ther, and

A. ry of Thy peo - ple Is - ra-el. Glo - ry be to the Fa - ther, and

T. ry of Thy peo - ple Is - ra-el. Glo - ry

B. ry of Thy peo - ple Is - ra-el. Glo - ry

35 **3/2**

S. to the Son, and to the Ho - ly Ghost, and

A. to the Son, and to the Ho - ly Ghost, and

T. be to the Fa - ther, and to the Son, and to the Ho - ly

B. be to the Fa - ther, and to the Son, and to the Ho -

40 **3/3** **4/1**

S. to the Ho - ly Ghost, and to the Ho - ly Ghost; As it

A. to the Ho ly, Ho - ly Ghost, and to the Ho - ly, Ho - ly Ghost; As it

T. Ghost, and to the Ho - ly, Ho - ly Ghost; As it

B. - ly Ghost, and to the Ho - ly, Ho - ly Ghost; As it

45 **4/2**

S. was in the be - gin - ning, As it

A. was in the be - gin - ning, As it

T. was in the be - gin - ning, As it

B. was in the be - gin - ning, is now, and ev - er shall be, As it

4/3

52

S. was in the be - gin _____ ning,

A. was in the be - gin _____ ning,

T. was in the be - gin _____ ning,

B. was in the be - gin _____ ning, is now, and ev _____

5/1

58

S. _____ and is now, and ev - er shall be, _____ is

A. _____ and is now, and ev - er shall be, _____ is

T. _____ and is now, and ev - er shall be, _____ is

B. _____ er shall be and is now, and ev - er shall be, is now, is

5/2

64

S. now, and ev - er shall be, world with - out end. A -

A. now, and ev - er shall be, world with - out end. A -

T. now, and ev - er shall be, world with - out end. A _____

B. now, and ev - er shall be, world with - out end. A -

68

S. men,

A. men, A - men, A men,

T. men, A - men, A men, A

B. men, A - men, A men, A - men,

72 **5/3**

S. A - men, A men, A men,

A. A men, A men, A - men, A - men,

T. men, A - men, A - men, A men, A - men,

B. A - men, A - men, A - men, A - men, A - men, A - men,

77 **6/1**

S. A - men, A men,

A. A - men, A men, A men,

T. A men, A men, A - men, A - men,

B. A men, A men, A - men, A - men, A -

6/2

81

S. A men, A men, A men, A

A. A men, A - men, A men, A

T. A - men, A - men, A - men, A men, A -

B. men, A - men, A men, A men, A - men, A

6/3

86

S. men, A - men, A men, A men, A men, A -

A. men, A - men, A men, A men, A -

T. men, A - men, A men, A men, A men, A -

B. men, A - men, A men, A men, A - men, A

91

S. men,

A. men.

T. men.

B. men.

Soprano

Nunc Dimittis

H. Purcell

1old/1sor **1/2**

Lord, Now let - test Thou Thy ser - vant de - part in peace, ac -

1/3

cord - ing to Thy word. For mine eyes have seen, have

2/1

seen Thy sal - va - tion, Which Thou hast pre - par - ed: be -

2/2 **2/3** 6 5

fore the face, the face of all peo - ple;

3/1 **3/2**

Glo - ry be to the Fa - ther, and to the Son, and to the Ho - ly

3/3

Ghost, and to the Ho - ly Ghost, and to the Ho -

4/1 **4/2** 2

ly Ghost; As it was in the be - gin - ning,

51 4/3

As it was in the be - gin ning, and is

60 5/1

now, and ev - er shall be, is now, and ev - er shall be,

66 5/2 5/3

world with-out end. A - men, A - men, A men,

74 6/1

A men, A - men, A men,

81 6/2

A men, A men, A men, A

86 6/3

men, A - men, A men, A men, A men, A - men,

Alto

Nunc Dimittis

H. Purcell

1old/1sor **1/2**

Lord, Now let - test Thou Thy ser - vant de - part in

5 **1/3**

peace, ac - cord - ing to Thy word. For mine eyes have

11

seen, have seen Thy sal - va - tion, Which Thou hast pre -

15 **2/1**

par - ed: be - fore the face, the face of all peo - ple; To be a

21 **2/2**

light to light - en the gen - tiles and to be the glo

26 **2/3**

ry, the glo ry of Thy peo - ple Is - ra - el.

32 **3/1** **3/2**

Glo - ry be to the Fa - ther, and to the Son, and to the Ho -

38

3/3



- lyGhost, and to the Ho ly, Ho - lyGhost, and to the Ho-ly,

43

4/1

4/2



Ho - lyGhost; As it was in the be - gin - ning,

51

4/3

3



As it was in the be - gin - ning, and is

60

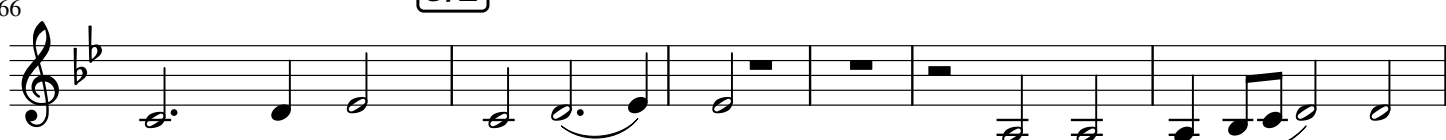
5/1



now, and ev - er shall be, is now, and ev - er shall be,

66

5/2



world with-out end. A - men, A-men, A - men,

72

5/3

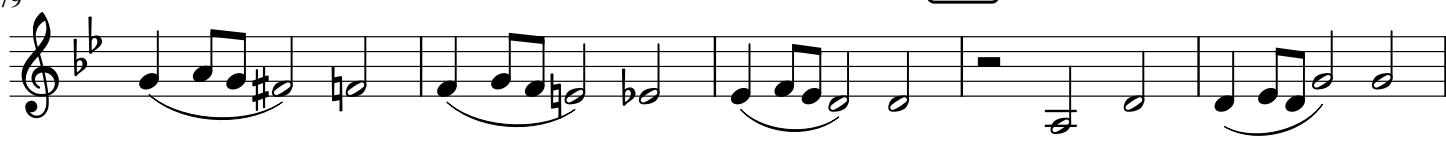
6/1



A - men, A - men, A - men, A - men, A-men,

79

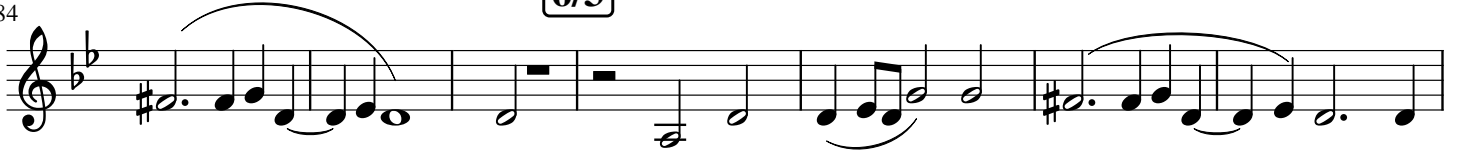
6/2



A - men, A - men, A - men, A-men, A - men,

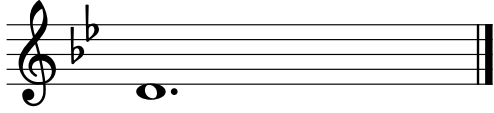
84

6/3



A_____ men, A-men, A_____men, A_____men, A-

91



men.

Tenor

Nunc Dimittis

H. Purcell

1old/1sor **1/2**

8 Lord, Now let - test Thou Thy ser - vant de - part in peace, ac -

6 cord - ing to Thy word. To be a light to

22 light - en the gen - tiles and to be the glo - ry, the

28 glo - ry of Thy peo - ple Is - ra - el. Glo - ry

35 be to the Fa - ther, and to the Son, and to the Ho - ly Ghost,

41 and to the Ho - ly, Ho - ly Ghost; As it was in the be -

47 gin - ning, As it was in the be - gin - ning,

56 4/3 3 5/1

8 and is now, and ev - er shall be, is

Detailed description: This musical staff covers measures 56 to 63. It begins with a treble clef, a key signature of two flats (B-flat and E-flat), and a common time signature. A boxed '4/3' is placed above the first measure, and a '3' (triple) is written above the first two notes. A boxed '5/1' is placed above the fifth measure. The lyrics 'and is now, and ev - er shall be, is' are written below the staff.

64 5/2

8 now, and ev - er shall be, world with - out end. A —

Detailed description: This musical staff covers measures 64 to 67. It continues with the same key signature and common time. A boxed '5/2' is placed above the fifth measure. The lyrics 'now, and ev - er shall be, world with - out end. A —' are written below the staff.

68 5/3

8 men, A - men, A — men, A — men, A - men,

Detailed description: This musical staff covers measures 68 to 72. A boxed '5/3' is placed above the fifth measure. The lyrics 'men, A - men, A — men, A — men, A - men,' are written below the staff.

73 6/1

8 A - men, A — men, A - men, A — men,

Detailed description: This musical staff covers measures 73 to 77. A boxed '6/1' is placed above the fifth measure. The lyrics 'A - men, A — men, A - men, A — men,' are written below the staff.

78 6/2

8 A — men, A - men, A - men, A - men, A - men, A -

Detailed description: This musical staff covers measures 78 to 83. A boxed '6/2' is placed above the fifth measure. The lyrics 'A — men, A - men, A - men, A - men, A - men, A -' are written below the staff.

84 6/3

8 men, A — men, A - men, A - men, A — men, A —

Detailed description: This musical staff covers measures 84 to 88. A boxed '6/3' is placed above the fifth measure. The lyrics 'men, A — men, A - men, A - men, A — men, A —' are written below the staff.

89

8 men, A — men, A - men.

Detailed description: This musical staff covers measures 89 to 92. The lyrics 'men, A — men, A - men.' are written below the staff, ending with a double bar line.

Bass

Nunc Dimittis

H. Purcell

1old/1sor **1/2**

Lord, Now let - test Thou Thy ser - vant de - part in

5 **1/3** (alt szólam)

peace, ac - cord - ing to Thy word. *For mine eyes have*

11

seen, have seen Thy sal - va - tion, Which Thou hast pre -

15 **2/1** Bass!!

par - ed: be - fore the face, the face of all peo - ple; To be a

21 **2/2**

light to light - en the gen - tiles and to be the glo -


27 **2/3** **3/1** 2

— ry, the glo — ry of Thy peo - ple Is - ra - el.

34 **3/2**

Glo - ry be to the Fa - ther, and to the Son, and to the Ho -

40 3/3 4/1




- lyGhost, and to the Ho-ly, Ho - lyGhost; As it was in

46 4/2



the be - gin - ning, is now, and ev_____ershall be, As it

52 4/3



was in the be - gin ning, is now, and ev_____

58 5/1




_____ershall be and is now, and ev - er shall be, is now, is

64 5/2



now, and ev - er shall be, world with-out end. A -

68 5/3




men, A - men, A_____men, A - men, A - men, A - men,

74 6/1




A - men, A - men, A - men, A - men, A_____men,

78



A_____men, A - men, A - men, A - men, A - men,

82 **6/2**



A ——— men, A ——— men, A - men, A ——— men, A - men,

Detailed description: This block contains the musical notation for measure 82. It is written on a single bass clef staff in a 6/2 time signature. The melody consists of five measures. The first measure has a half note G2, a quarter note F2, a quarter note E2, and a quarter note D2. The second measure has a half note C2, a quarter note B1, a quarter note A1, and a quarter note G1. The third measure has a half note F1, a quarter note E1, and a quarter note D1. The fourth measure has a half note C1, a quarter note B0, and a quarter note A0. The fifth measure has a half note G0, a quarter note F0, and a quarter note E0. The lyrics 'A ——— men, A ——— men, A - men, A ——— men, A - men,' are written below the staff, with horizontal lines under the 'A' notes to indicate their duration.

87 **6/3**



A ——— men, A ——— men, A - men, A ——— men.

Detailed description: This block contains the musical notation for measure 87. It is written on a single bass clef staff in a 6/3 time signature. The melody consists of five measures. The first measure has a half note G2, a quarter note F2, a quarter note E2, and a quarter note D2. The second measure has a half note C2, a quarter note B1, a quarter note A1, and a quarter note G1. The third measure has a half note F1, a quarter note E1, and a quarter note D1. The fourth measure has a half note C1, a quarter note B0, and a quarter note A0. The fifth measure has a half note G0, a quarter note F0, and a quarter note E0. The lyrics 'A ——— men, A ——— men, A - men, A ——— men.' are written below the staff, with horizontal lines under the 'A' notes to indicate their duration.